

# DOUBLE TREE PLAT NO. 4, A P.U.D.

" A PLAT OF PHASE II A "

BEING A PARCEL OF LAND LYING IN  
SECTIONS 1 AND 12, TOWNSHIP 39 SOUTH, RANGE 41 EAST,  
MARTIN COUNTY, FLORIDA.  
JULY 1994

### CLERK'S RECORDING CERTIFICATE

I, MARSHA STILLER, CLERK OF THE CIRCUIT COURT OF MARTIN COUNTY, FLORIDA, HEREBY CERTIFY THAT THIS PLAT WAS FILED FOR RECORD IN

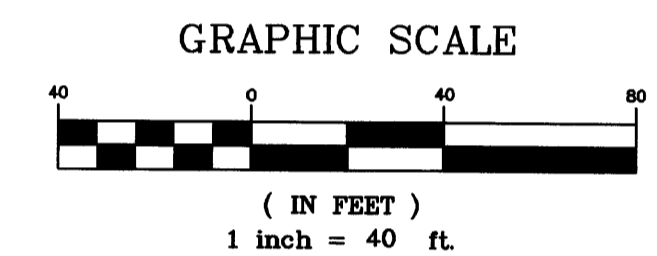
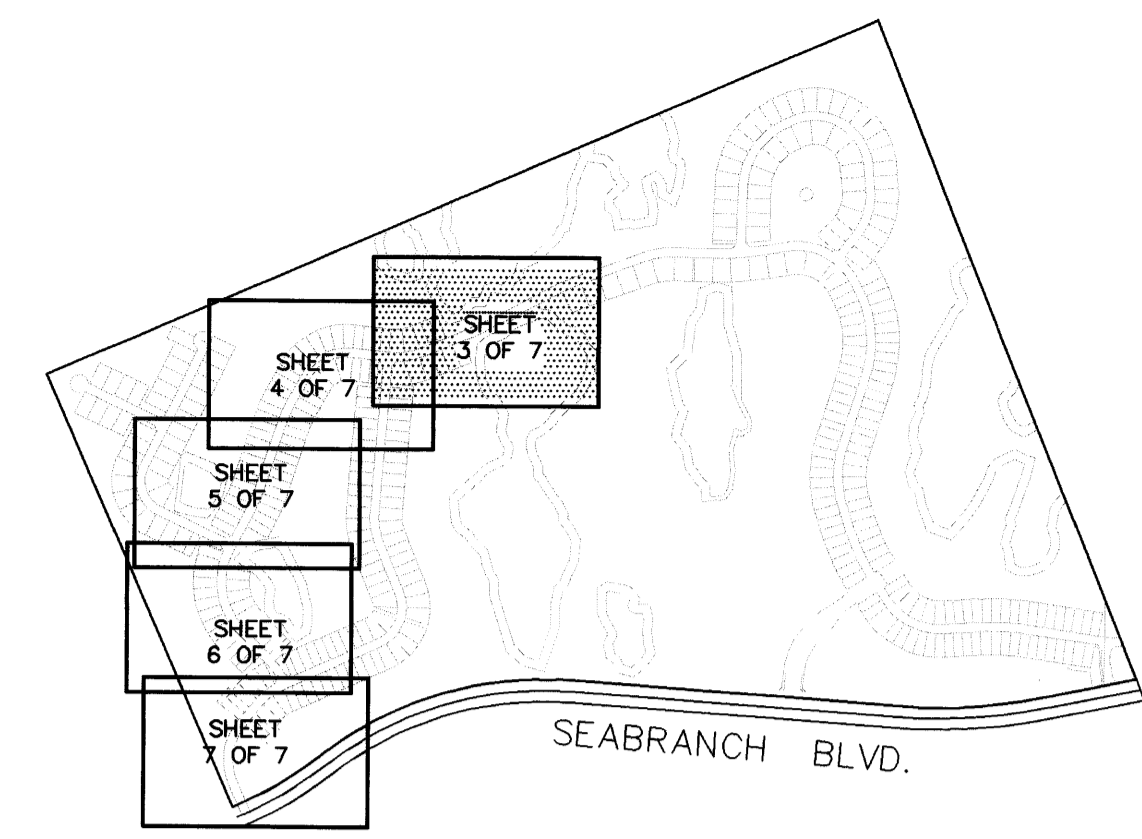
PLAT BOOK 13, PAGE 63,  
MARTIN COUNTY, FLORIDA, PUBLIC RECORDS THIS

31 DAY OF August, 1994

MARSHA STILLER, CLERK OF THE CIRCUIT COURT  
MARTIN COUNTY, FLORIDA.

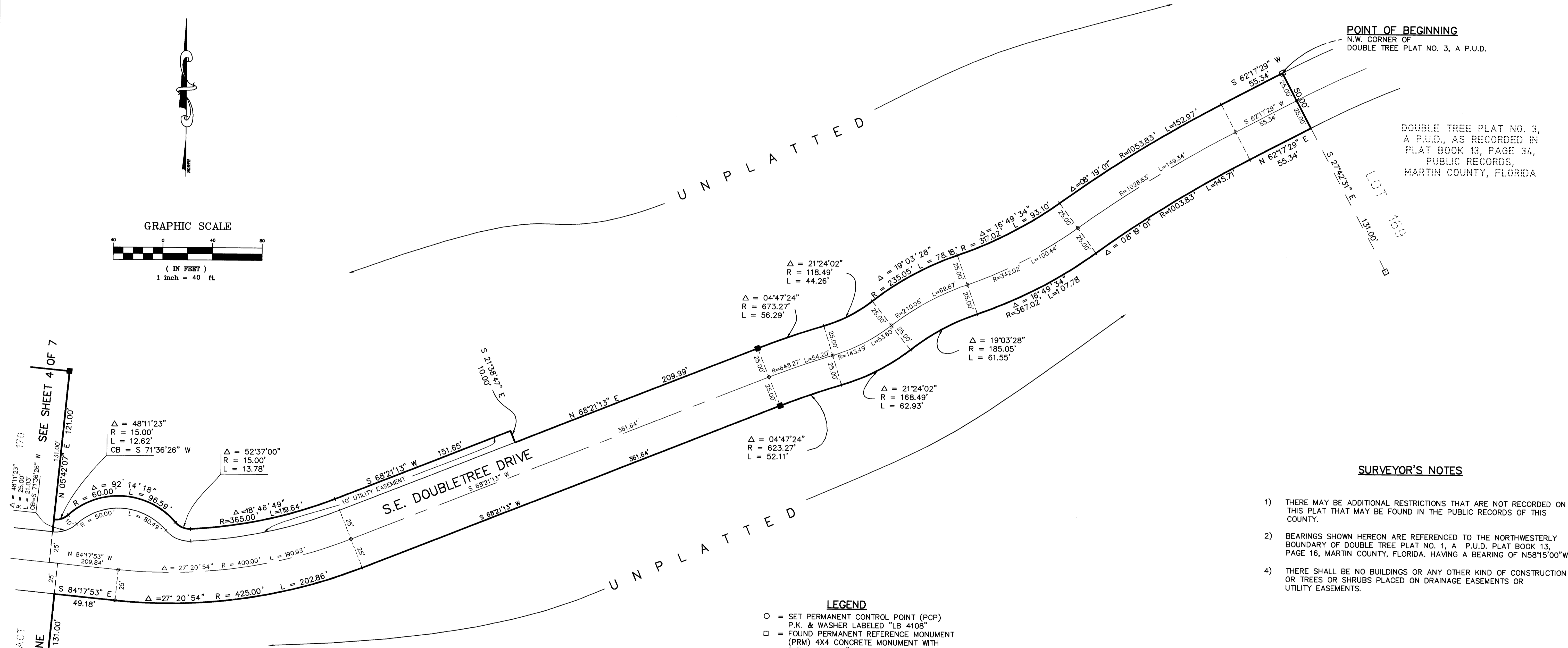
FILE NUMBER 107958 BY Deborah L. Langston  
DEPUTY CLERK

SUBDIVISION PARCEL CONTROL NO.



POINT OF BEGINNING  
N.W. CORNER OF  
DOUBLE TREE PLAT NO. 3, A P.U.D.

DOUBLE TREE PLAT NO. 3,  
A P.U.D., AS RECORDED IN  
PLAT BOOK 13, PAGE 34,  
PUBLIC RECORDS,  
MARTIN COUNTY, FLORIDA

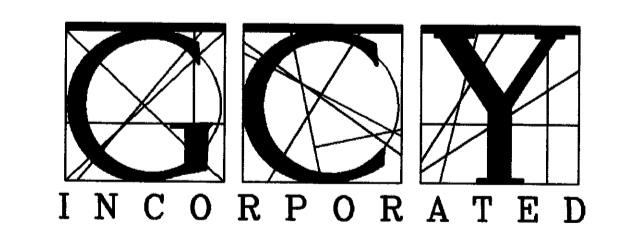


### SURVEYOR'S NOTES

- 1) THERE MAY BE ADDITIONAL RESTRICTIONS THAT ARE NOT RECORDED ON THIS PLAT THAT MAY BE FOUND IN THE PUBLIC RECORDS OF THIS COUNTY.
- 2) BEARINGS SHOWN HEREON ARE REFERENCED TO THE NORTHWESTERLY BOUNDARY OF DOUBLE TREE PLAT NO. 1, A P.U.D. PLAT BOOK 13, PAGE 16, MARTIN COUNTY, FLORIDA. HAVING A BEARING OF N58°15'00"W
- 4) THERE SHALL BE NO BUILDINGS OR ANY OTHER KIND OF CONSTRUCTION OR TREES OR SHRUBS PLACED ON DRAINAGE EASEMENTS OR UTILITY EASEMENTS.

### LEGEND

- = SET PERMANENT CONTROL POINT (PCP)  
P.K. & WASHER LABELED "LB 4108"
- = FOUND PERMANENT REFERENCE MONUMENT  
(PRM) 4X4 CONCRETE MONUMENT WITH  
DISK LABELED "G.C.Y. INC. P.R.M. LB 4108,  
RLS 4130"
- U.E. = UTILITY EASEMENT  
D.E. = DRAINAGE EASEMENT  
M.E. = MAINTENANCE EASEMENT
- = SET PERMANENT REFERENCE MONUMENT  
(PRM) 4X4 CONCRETE MONUMENT WITH  
DISK LABELED "G.C.Y. INC. P.R.M. LB 4108,  
RLS 4130"
- R = RADIUS  
L = ARC LENGTH  
Δ = DELTA  
RAD. = RADIAL LINE  
CB = CHORD BEARING  
RLS = REGISTERED LAND SURVEYOR  
LB = LICENSED BUSINESS



CIVIL ENGINEERS / LAND SURVEYORS

PALM CITY • 1505 S.W. MARTIN HWY. • 407 286-8083  
FT. PIERCE • 4075 VIRGINIA AVE. 34982 • 407 466-9500

C:\DWG\GCA\PLAT\DTPL-3.FT1 JUL 15 08:06:45 1994